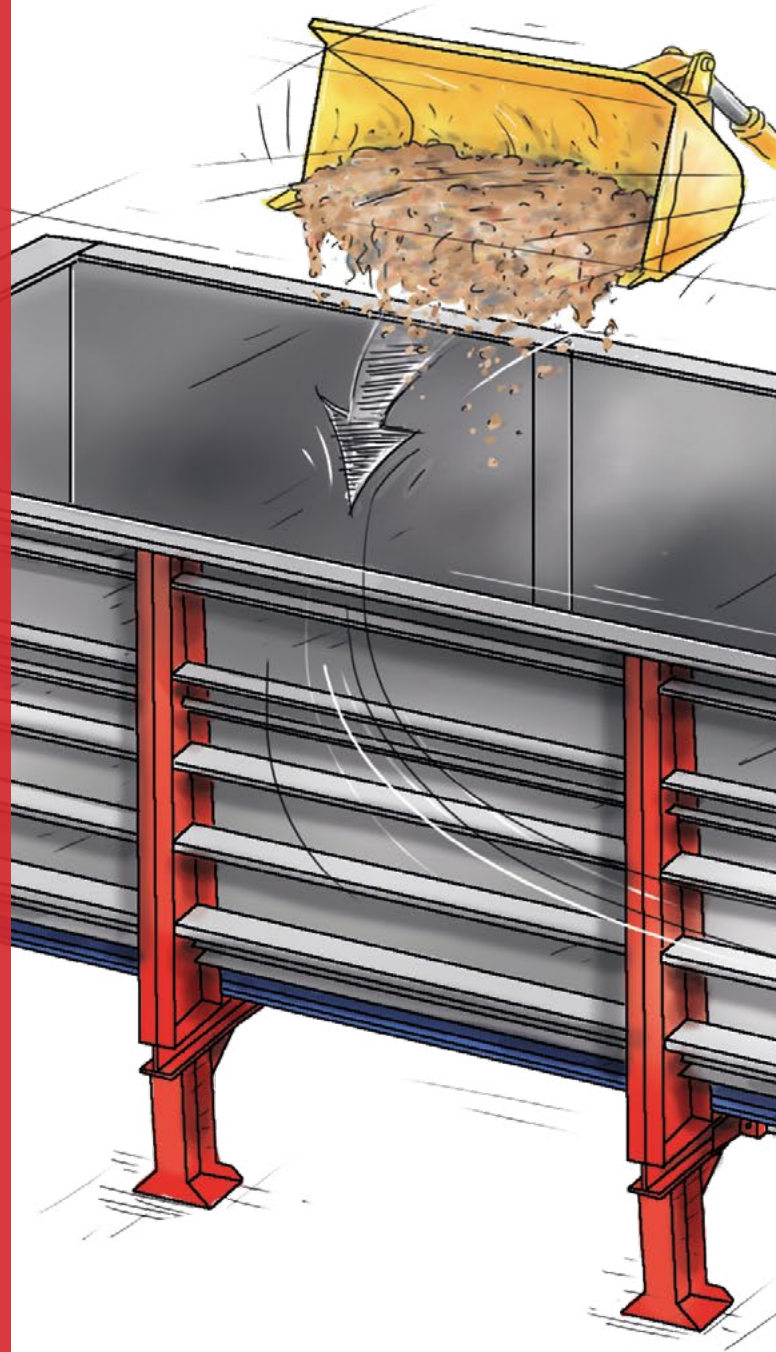
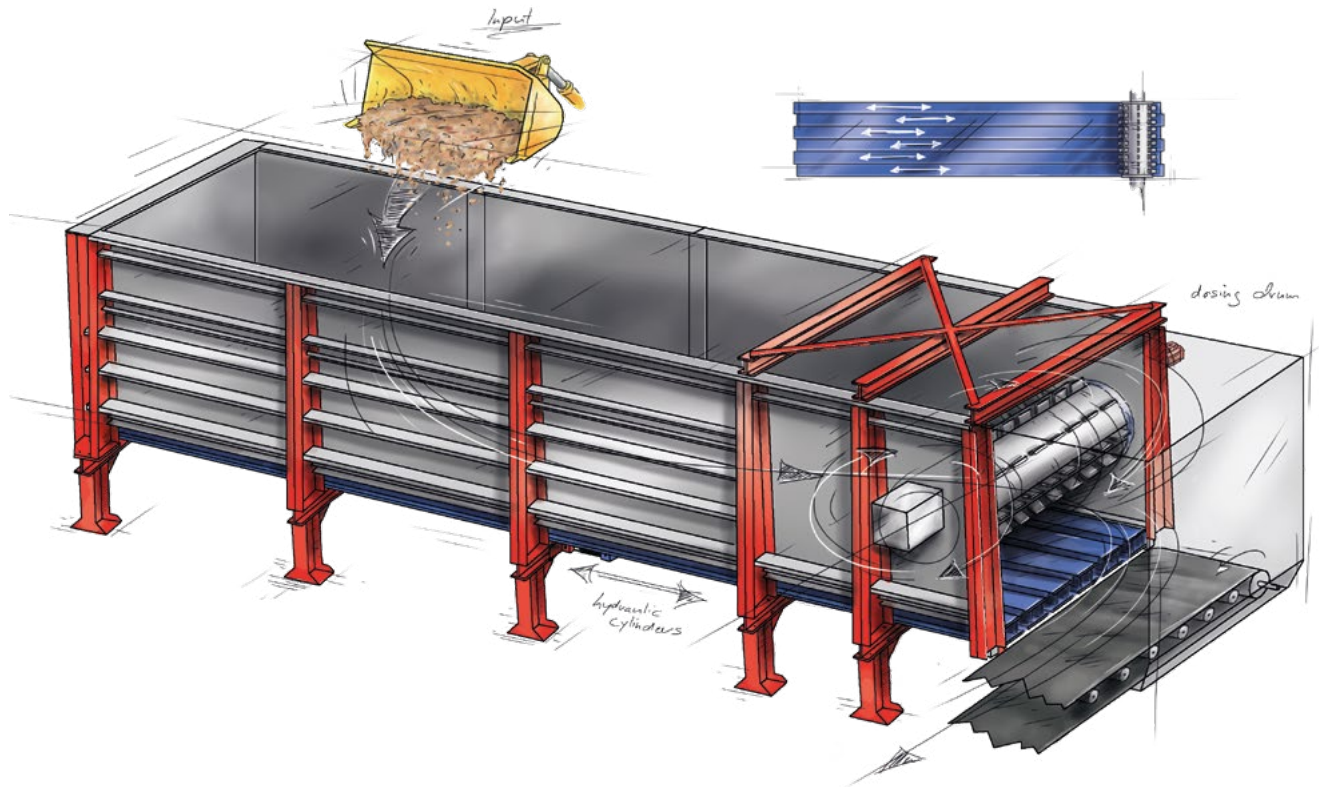


# Moving Floor®

DOSING | PRODUCT PRESENTATION



# MovingFloor®



## Dosing material with flexibility

The MovingFloor is a bunker system that helps you dose any type of material, ensuring an even and continuous flow. It has been engineered to facilitate on-site assembly and thanks to its flexible components the size of the machine can be increased or decreased as desired at any given time.

With the MovingFloor you can process substitute fuels, compost, mixed construction waste and much more. Its modules can be delivered within 6 weeks and shipped in standard sea containers.

---

## About us

Westeria is a German company from Westphalia with over 60 years of experience producing innovative machinery. Since 1956, our product portfolio has largely grown to provide high-quality machines, technical expertise and excellent service to our clients. We are constantly developing new recycling machines and conveyor systems for what is perhaps the biggest challenge of the present day: make the circular economy a valuable and profitable reality all over the world.

# Key advantages

## Modularity

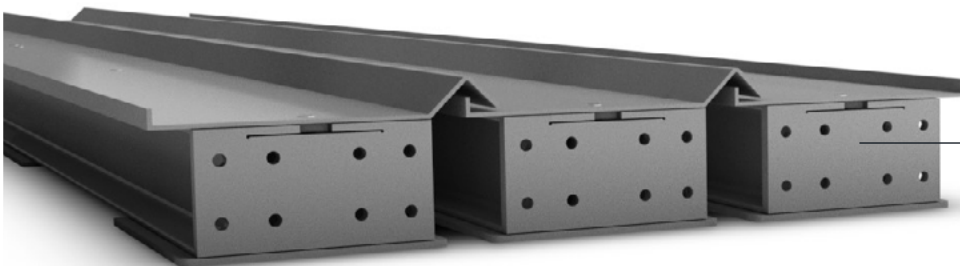
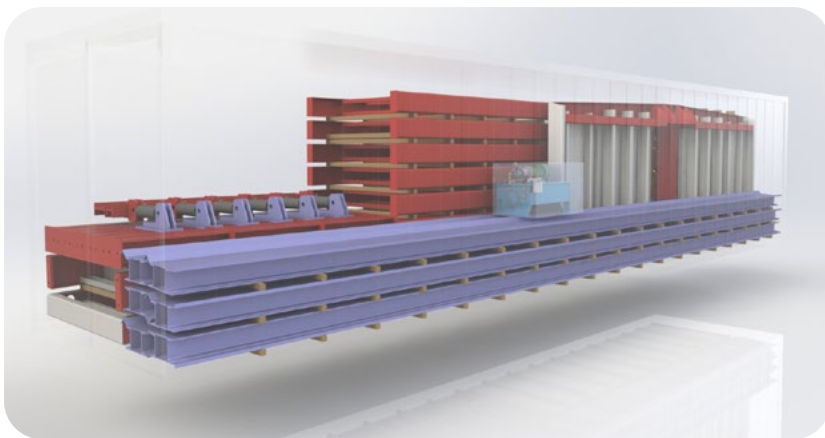
Size of the machine can be increased or decreased at any time, ensuring long-term value creation.

## Fast assembly

The MovingFloor is easily and quickly assembled, as it was conceived following the building kit principle.

## Easy maintenance

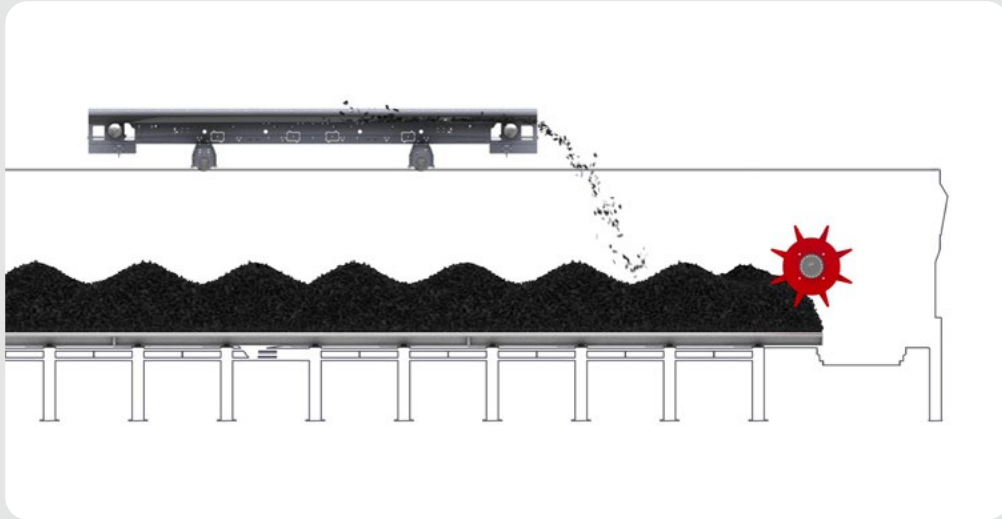
Minimum wear and tear costs due to omission of bearings, shafts, chains or conveyor belts.



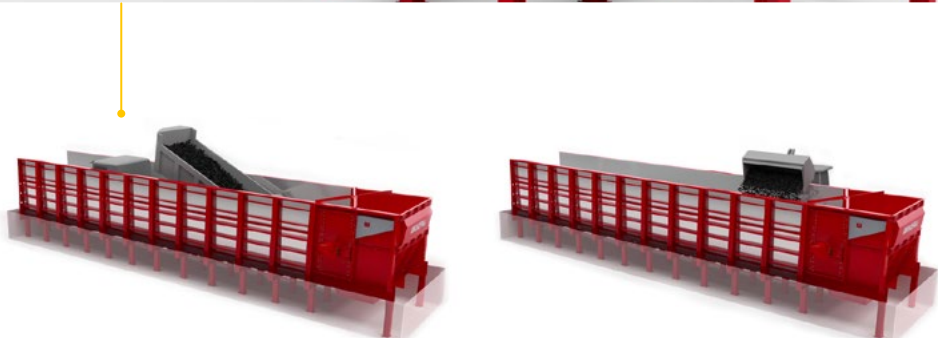
Robust sealing system with individually replaceable wear plates, supports up to 50 t/m<sup>3</sup> of material.



# Application examples

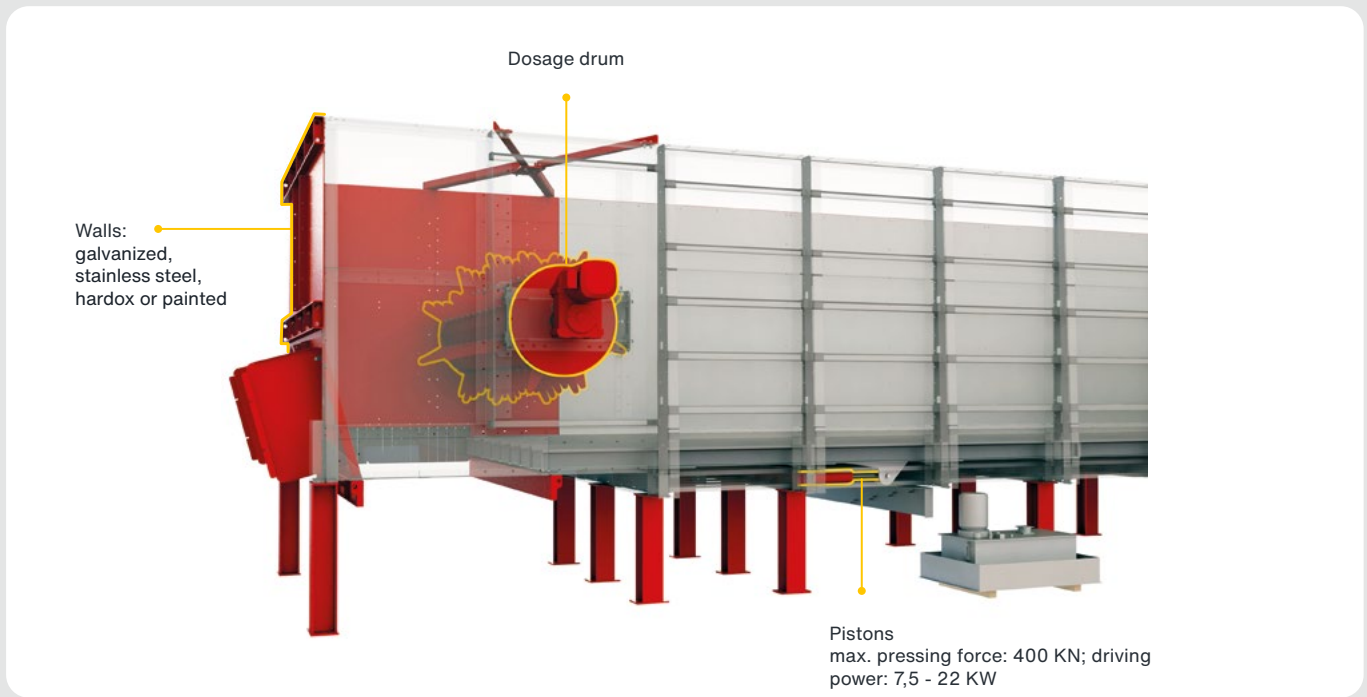


The MovingFloor can dose any bulk material for diverse applications, such as recycling or concrete processing plants.



Depending on the application, the material can be loaded in different ways.

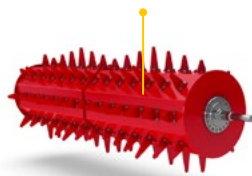
# Options



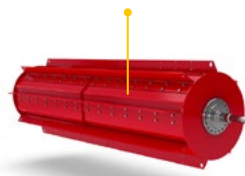
## Equalisation drums

An equalisation drum can be added to ensure a constant material feeding even with a full bunker load. Its sealing system prevents materials jams between the casing wall and the drum. The height of the rollers can be easily adjusted.

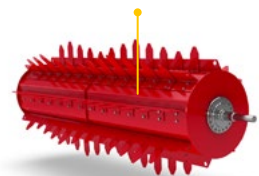
for shredded tires or biomass



for waste and compost



for construction waste



## Material load

- Light: up to 0.3 t/m<sup>3</sup>
- Medium: up to 0.6 t/m<sup>3</sup>
- Heavy: up to 1.2 t/m<sup>3</sup>

## Hydraulic pistons

The MovingFloor can be configured with five different hydraulic cylinder pistons with different diameters to fit any application.

## Integrable

Its technology can be integrated into existing concrete bunkers and ensures the maximum efficiency of connected sorting systems or incinerators.







Westeria® GmbH

Raiffeisenstr. 2, 48346 Ostbevern, Germany  
Tel +49 2532 88-0 | [www.westeria.de](http://www.westeria.de)